

Tavole di Compatibilità Unità Interne Multi R410A

38QUS014DS2-2		
1 Unità	2 Unità	
7	7+7	9+9
9	9+7	NA
12	12+7	NA
18	NA	NA

38QUS018DS2-2		
1 Unità	2 Unità	
7	7+7	9+9
9	7+9	9+12
12	7+12	NA
18	NA	NA

38QUS021DS3-1				
1 Unità	2 Unità	3 Unità		
7	7+7	9+9	7+7+7	9+9+9
9	9+7	9+12	7+7+9	NA
12	12+7	9+18	7+7+12	NA
18	18+7	12+12	7+9+9	NA

38QUS027DS3-1					
1 Unità	2 Unità		3 Unità		
7	7+7	9+9	12+18	7+7+7	9+9+9
9	7+9	9+12	NA	7+7+9	7+9+12
12	7+12	9+18	NA	7+7+12	9+9+12
18	7+18	12+12	NA	7+7+18	7+12+12

38QUS028DS4-1						
1 Unità	2 Unità		3 Unità		4 Unità	
7	7+7	9+9	7+7+7	7+9+12	9+9+18	7+7+7+7
9	7+9	9+12	7+7+9	7+9+18	9+12+12	7+7+7+9
12	7+12	9+18	7+7+12	7+12+12	12+12+12	7+7+7+12
18	7+18	12+12	7+7+18	9+9+9	NA	7+7+9+9
NA	12+18	18+18	7+9+9	9+9+12	NA	7+7+9+12

38QUS036DS4-1									
1 Unità	2 Unità			3 Unità			4 Unità		
7	7+7	9+9	12+18	7+7+7	7+9+12	9+9+9	9+12+24	7+7+7+7	7+7+9+12
9	7+9	9+12	18+18	7+7+9	7+9+18	9+9+12	9+18+18	7+7+7+9	7+7+9+18
12	7+12	9+18	NA	7+7+12	7+12+12	9+9+18	12+12+12	7+7+7+12	7+7+12+18
18	7+18	12+12	NA	7+7+18	7+18+18	9+12+12	12+12+18	7+7+7+18	7+9+9+9
NA	NA	NA	NA	7+9+9	7+18+18	9+12+18	NA	7+7+9+9	9+9+9+9

38QUS042DS5-1														
1 Unità	2 Unità			3 Unità			4 Unità			5 Unità				
7	7+7	9+9	12+18	7+7+7	7+9+12	9+9+18	9+18+18	9+12+24	7+7+7+7	7+7+9+9	7+7+12+18	7+9+9+18	7+9+18+18	9+9+9+18
9	7+9	9+12	12+24	7+7+9	7+9+12	7+12+18	9+9+24	12+12+12	7+7+7+9	7+7+9+12	7+7+12+18	7+7+9+18	7+7+9+18	7+9+9+9
12	7+12	9+18	18+18	7+7+12	7+9+18	7+18+18	9+12+12	12+12+18	7+7+7+12	7+7+9+18	7+7+18+18	7+9+9+9	7+9+9+18	9+9+9+9
18	7+18	9+24	NA	7+7+18	7+9+24	9+9+9	9+12+18	12+12+24	7+7+7+18	7+7+9+24	7+9+9+9	7+9+12+18	9+9+9+9	9+9+9+18
24	7+24	12+12	NA	7+7+24	7+12+12	9+9+12	9+12+24	12+18+18	7+7+7+24	7+7+12+12	7+9+9+12	7+9+12+24	9+9+9+12	9+9+12+24

TAVOLE DI CONFIGURAZIONE - UNITA' ESTERNA MULTI 14Kbtu R410A

RAFFREDDAMENTO

Comb.	Funzionam.	Combinazioni (x1000 Btu/h)		Capacità Individuale Nominale (kW)		Capacità Totale Erogata (kW)			Potenza Totale Assorbita (kW)			EER (W/W)
		Unità A	Unità B	Unità A	Unità B	Min.	Nominale	Max.	Min.	Nominale	Max.	
1:1	7	7	—	2.00	—	1.23	2.00	2.90	0.30	0.62	0.77	3.23
	9	9	—	2.50	—	1.23	2.50	3.20	0.30	0.77	0.97	3.23
	12	12	—	3.50	—	1.23	3.50	3.90	0.30	1.08	1.30	3.23
	18	18	—	4.10	—	1.35	4.10	4.50	0.40	1.27	1.46	3.23
1:2	7+7	7	7	2.05	2.05	1.76	4.10	4.54	0.43	1.27	1.46	3.23
	7+9	7	9	1.79	2.31	1.76	4.10	4.54	0.43	1.27	1.46	3.23
	7+12	7	12	1.51	2.59	1.76	4.10	4.54	0.43	1.27	1.46	3.24
	9+9	9	9	2.05	2.05	1.76	4.10	4.54	0.43	1.27	1.46	3.24

RISCALDAMENTO

Comb.	Funzionam.	Combinazioni (x1000 Btu/h)		Capacità Individuale Nominale (kW)		Capacità Totale Erogata (kW)			Potenza Totale Assorbita (kW)			COP (W/W)
		Unità A	Unità B	Unità A	Unità B	Min.	Nominale	Max.	Min.	Nominale	Max.	
1:1	7	7	—	2.45	—	1.41	2.50	2.82	0.28	0.67	0.83	3.75
	9	9	—	2.92	—	1.41	2.90	3.36	0.28	0.78	0.97	3.73
	12	12	—	3.75	—	1.41	3.80	4.31	0.28	1.02	1.23	3.72
	18	18	—	4.70	—	1.55	4.70	5.20	0.38	1.27	1.32	3.71
1:2	7+7	7	7	2.35	2.35	2.02	4.70	5.20	0.39	1.15	1.32	4.10
	7+9	7	9	2.06	2.64	2.02	4.70	5.20	0.39	1.15	1.32	4.10
	7+12	7	12	1.75	3.00	2.02	4.75	5.26	0.39	1.19	1.32	4.00
	9+9	9	9	2.38	2.38	2.02	4.75	5.26	0.39	1.19	1.32	4.00



TAVOLE DI CONFIGURAZIONE - UNITA' ESTERNA MULTI 18Kbtu R410A

RAFFREDDAMENTO

Comb.	Funziona m.	Combinazioni (x1000 Btu/h)		Capacità Individuale Nominale (kW)		Capacità Totale Erogata (kW)			Potenza Totale Assorbita (kW)			EER (W/W)
		Unità A	Unità B	Unità A	Unità B	Min.	Nominale	Max.	Min.	Nominale	Max.	
1:1	7	7	—	2.00	—	1.40	2.00	2.90	0.35	0.62	0.77	3.24
	9	9	—	2.50	—	1.40	2.50	3.20	0.35	0.77	0.96	3.24
	12	12	—	3.50	—	1.40	3.50	3.90	0.35	1.07	1.29	3.26
	18	18	—	5.00	—	1.61	5.00	5.41	0.45	1.55	2.01	3.23
1:2	7+7	7	7	2.10	2.10	2.08	4.20	5.51	0.53	1.05	2.17	4.00
	7+9	7	9	2.06	2.64	2.08	4.70	5.72	0.53	1.24	2.17	3.80
	7+12	7	12	1.95	3.35	2.08	5.30	6.29	0.53	1.64	2.17	3.23
	9+9	9	9	2.60	2.60	2.08	5.20	6.29	0.53	1.61	2.17	3.23
	9+12	9	12	2.31	3.09	2.08	5.40	6.29	0.53	1.67	2.17	3.23

RISCALDAMENTO

Comb.	Funziona m.	Combinazioni (x1000 Btu/h)		Capacità Individuale Nominale		Capacità Totale Erogata (kW)			Potenza Totale Assorbita (kW)			COP (W/W)
		Unità A	Unità B	Unità A	Unità B	Min.	Nominale	Max.	Min.	Nominale	Max.	
1:1	7	7	—	2.50	—	1.54	2.50	3.03	0.32	0.67	0.84	3.73
	9	9	—	3.00	—	1.54	3.00	3.63	0.32	0.80	1.01	3.73
	12	12	—	3.80	—	1.54	3.80	4.60	0.32	1.01	1.22	3.75
	18	18	—	5.30	—	1.71	5.30	5.72	0.42	1.43	1.72	3.71
1:2	7+7	7	7	2.50	2.50	2.20	5.00	5.94	0.47	1.22	1.86	4.10
	7+9	7	9	2.32	2.98	2.20	5.30	6.05	0.47	1.29	1.86	4.10
	7+12	7	12	2.03	3.47	2.20	5.50	6.66	0.47	1.43	1.86	3.85
	9+9	9	9	2.75	2.75	2.20	5.50	6.66	0.47	1.38	1.86	4.00
	9+12	9	12	2.40	3.20	2.20	5.60	6.66	0.47	1.45	1.86	3.85



TAVOLE DI CONFIGURAZIONE - UNITA' ESTERNA MULTI 21Kbtu R410A

RAFFREDDAMENTO

Comb.	Funziona m.	Combinazioni (x1000 Btu/h)			Capacità Individuale Nominale (kW)			Capacità Totale Erogata (kW)			Potenza Totale Assorbita (kW)			EER (W/W)
		Unità A	Unità B	Unità C	Unità A	Unità B	Unità C	Min.	Nominale	Max.	Min.	Nominale	Max.	
1:1	7	7	—	—	2.00	—	—	1.43	2.00	2.90	0.38	0.62	0.78	3.21
	9	9	—	—	2.50	—	—	1.43	2.50	3.20	0.38	0.78	0.97	3.21
	12	12	—	—	3.50	—	—	1.43	3.50	3.90	0.38	1.09	1.31	3.21
	18	18	—	—	5.00	—	—	1.65	5.00	6.50	0.48	1.55	1.79	3.22
1:2	7+7	7	7	—	2.10	2.10	—	2.01	4.20	5.49	0.56	1.31	1.88	3.21
	7+9	7	9	—	2.06	2.64	—	2.01	4.70	5.80	0.56	1.46	1.98	3.21
	7+12	7	12	—	1.95	3.35	—	2.01	5.30	6.10	0.56	1.65	2.07	3.21
	7+18	7	18	—	1.76	4.54	—	2.01	6.30	6.83	0.56	1.94	2.17	3.24
	9+9	9	9	—	2.65	2.65	—	2.01	5.30	6.41	0.56	1.65	2.07	3.21
	9+12	9	12	—	2.57	3.43	—	2.01	6.00	6.59	0.56	1.85	2.11	3.24
	9+18	9	18	—	2.10	4.20	—	2.01	6.30	6.83	0.56	1.94	2.17	3.24
	12+12	12	12	—	3.10	3.10	—	2.01	6.20	6.83	0.56	1.91	2.17	3.24
1:3	7+7+7	7	7	7	2.03	2.03	2.03	2.44	6.10	7.20	0.68	1.88	2.35	3.24
	7+7+9	7	7	9	1.92	1.92	2.47	2.44	6.30	7.26	0.68	1.94	2.35	3.24
	7+7+12	7	7	12	1.70	1.70	2.91	2.44	6.30	7.32	0.68	1.94	2.35	3.24
	7+9+9	7	9	9	1.76	2.27	2.27	2.44	6.30	7.32	0.68	1.94	2.35	3.24
	9+9+9	9	9	9	2.10	2.10	2.10	2.44	6.30	7.32	0.68	1.94	2.35	3.24

RISCALDAMENTO

Comb.	Indoor Units	Combinazioni (x1000 Btu/h)			Capacità Individuale Nominale (kW)			Capacità Totale Erogata (kW)			Potenza Totale Assorbita (kW)			COP (W/W)
		Unità A	Unità B	Unità C	Unità A	Unità B	Unità C	Min.	Nominale	Max.	Min.	Nominale	Max.	
1:1	7	7	—	—	2.50	—	—	1.43	2.50	3.03	0.35	0.73	0.92	3.41
	9	9	—	—	3.00	—	—	1.43	3.00	3.63	0.35	0.88	1.10	3.41
	12	12	—	—	3.80	—	—	1.43	3.80	4.60	0.35	1.11	1.34	3.41
	18	18	—	—	5.30	—	—	1.82	5.30	6.94	0.45	1.54	2.07	3.45
1:2	7+7	7	7	—	2.50	2.50	—	2.22	5.00	6.07	0.54	1.39	1.80	3.61
	7+9	7	9	—	2.45	3.15	—	2.22	5.60	6.40	0.54	1.55	1.89	3.61
	7+12	7	12	—	2.21	3.79	—	2.22	6.00	6.74	0.54	1.64	1.98	3.65
	7+18	7	18	—	1.79	4.61	—	2.22	6.40	7.55	0.54	1.76	2.07	3.63
	9+9	9	9	—	3.00	3.00	—	2.22	6.00	7.08	0.54	1.64	1.98	3.65
	9+12	9	12	—	2.74	3.66	—	2.22	6.40	7.28	0.54	1.75	2.01	3.65
	9+18	9	18	—	2.13	4.27	—	2.22	6.40	7.55	0.54	1.77	2.07	3.62
	12+12	12	12	—	3.20	3.20	—	2.22	6.40	7.55	0.54	1.75	2.07	3.65
1:3	7+7+7	7	7	7	2.25	2.25	2.25	2.70	6.74	7.95	0.65	1.80	2.25	3.75
	7+7+9	7	7	9	2.07	2.07	2.66	2.70	6.80	7.95	0.65	1.81	2.25	3.75
	7+7+12	7	7	12	1.86	1.86	3.18	2.70	6.90	8.09	0.65	1.84	2.25	3.75
	7+9+9	7	9	9	1.93	2.48	2.48	2.70	6.90	8.09	0.65	1.84	2.25	3.75
	9+9+9	9	9	9	2.30	2.30	2.30	2.70	6.90	8.09	0.65	1.84	2.25	3.75



TAVOLE DI CONFIGURAZIONE - UNITA' ESTERNA MULTI 27Kbtu R410A

RAFFREDDAMENTO

Comb.	Funziona m.	Combinazioni (x1000 Btu/h)			Capacità Individuale Nominale (kW)			Capacità Totale Erogata (kW)			Potenza Totale Assorbita (kW)			EER (W/W)
		Unità A	Unità B	Unità C	Unità A	Unità B	Unità C	Min.	Rated	Max.	Min.	Rated	Max.	
1:1	7	7	—	—	2.00	—	—	1.58	2.00	2.90	0.40	0.62	0.78	3.21
	9	9	—	—	2.50	—	—	1.58	2.50	3.20	0.40	0.78	0.97	3.21
	12	12	—	—	3.50	—	—	1.58	3.50	3.90	0.40	1.09	1.31	3.21
	18	18	—	—	5.00	—	—	1.78	5.00	6.50	0.50	1.55	1.79	3.22
1:2	7+7	7	7	—	2.10	2.10	—	2.21	4.20	6.32	0.64	1.30	2.08	3.23
	7+9	7	9	—	2.06	2.64	—	2.21	4.70	6.72	0.64	1.46	2.20	3.23
	7+12	7	12	—	1.95	3.35	—	2.21	5.30	7.11	0.64	1.64	2.45	3.23
	7+18	7	18	—	1.82	4.68	—	2.21	6.50	7.90	0.64	2.01	2.69	3.23
	9+9	9	9	—	2.65	2.65	—	2.21	5.30	7.11	0.64	1.64	2.45	3.23
	9+12	9	12	—	2.57	3.43	—	2.21	6.00	7.51	0.64	1.86	2.57	3.23
	9+18	9	18	—	2.27	4.53	—	2.21	6.80	7.90	0.64	2.11	2.69	3.23
	12+12	12	12	—	3.15	3.15	—	2.21	6.30	7.66	0.64	1.95	2.64	3.23
	12+18	12	18	—	2.72	4.08	—	2.21	6.80	7.90	0.64	2.11	2.69	3.23
	1:3	7+7+7	7	7	7	2.43	2.43	2.43	2.77	7.30	8.69	0.76	2.26	2.91
7+7+9	7	7	9	2.25	2.25	2.90	2.77	7.40	8.69	0.76	2.29	2.91	3.23	
7+7+12	7	7	12	2.13	2.13	3.65	2.77	7.90	8.69	0.76	2.45	2.91	3.23	
7+7+18	7	7	18	1.73	1.73	4.44	2.77	7.90	8.69	0.76	2.45	2.91	3.23	
7+9+9	7	9	9	2.13	2.74	2.74	2.77	7.60	8.69	0.76	2.35	2.91	3.23	
7+9+12	7	9	12	1.98	2.54	3.39	2.77	7.90	8.69	0.76	2.45	2.91	3.23	
7+9+18	7	9	18	1.63	2.09	4.18	2.77	7.90	8.69	0.76	2.45	2.91	3.23	
7+12+12	7	12	12	1.78	3.06	3.06	2.77	7.90	8.69	0.76	2.45	2.91	3.23	
9+9+9	9	9	9	2.63	2.63	2.63	2.77	7.90	8.69	0.76	2.45	2.91	3.23	
9+9+12	9	9	12	2.37	2.37	3.16	2.77	7.90	8.69	0.76	2.45	2.91	3.23	
9+12+12	9	12	12	2.15	2.87	2.87	2.77	7.90	8.69	0.76	2.45	2.91	3.23	

RISCALDAMENTO

Comb.	Indoor Units	Combinazioni (x1000 Btu/h)			Capacità Individuale Nominale (kW)			Capacità Totale Erogata (kW)			Potenza Totale Assorbita (kW)			COP (W/W)
		Unità A	Unità B	Unità C	Unità A	Unità B	Unità C	Min.	Nominale	Max.	Min.	Nominale	Max.	
1:1	7	7	—	—	2.50	—	—	1.58	2.50	2.90	0.40	0.69	0.87	3.61
	9	9	—	—	3.00	—	—	1.58	3.00	3.20	0.40	0.83	1.04	3.61
	12	12	—	—	3.80	—	—	1.58	3.80	3.90	0.40	1.05	1.26	3.61
	18	18	—	—	5.60	—	—	1.82	5.60	6.95	0.50	1.55	1.78	3.61
1:2	7+7	7	7	—	2.50	2.50	—	2.21	5.00	6.32	0.55	1.38	1.81	3.62
	7+9	7	9	—	2.45	3.15	—	2.21	5.60	6.72	0.55	1.54	1.91	3.63
	7+12	7	12	—	2.21	3.79	—	2.21	6.00	7.11	0.55	1.61	2.12	3.72
	7+18	7	18	—	1.96	5.04	—	2.21	7.00	7.90	0.55	1.88	2.34	3.73
	9+9	9	9	—	3.00	3.00	—	2.21	6.00	7.11	0.55	1.61	2.12	3.72
	9+12	9	12	—	2.70	3.60	—	2.21	6.30	7.51	0.55	1.69	2.23	3.73
	9+18	9	18	—	2.33	4.67	—	2.21	7.00	7.90	0.55	1.88	2.34	3.72
	12+12	12	12	—	3.25	3.25	—	2.21	6.50	7.66	0.55	1.74	2.29	3.73
	12+18	12	18	—	2.80	4.20	—	2.21	7.00	7.90	0.55	1.88	2.34	3.72
	1:3	7+7+7	7	7	7	2.27	2.27	2.27	2.77	6.80	8.69	0.66	1.82	2.53
7+7+9	7	7	9	2.13	2.13	2.74	2.77	7.00	8.69	0.66	1.88	2.53	3.72	
7+7+12	7	7	12	2.05	2.05	3.52	2.77	7.62	8.69	0.66	2.04	2.53	3.73	
7+7+18	7	7	18	1.75	1.75	4.50	2.77	8.00	8.69	0.66	2.15	2.53	3.72	
7+9+9	7	9	9	2.13	2.74	2.74	2.77	7.62	8.69	0.66	2.04	2.53	3.73	
7+9+12	7	9	12	1.98	2.54	3.39	2.77	7.90	8.69	0.66	2.12	2.53	3.72	
7+9+18	7	9	18	1.65	2.12	4.24	2.77	8.00	8.69	0.66	2.15	2.53	3.72	
7+12+12	7	12	12	1.81	3.10	3.10	2.77	8.00	8.69	0.66	2.15	2.53	3.72	
9+9+9	9	9	9	2.63	2.63	2.63	2.77	7.90	8.69	0.66	2.12	2.53	3.72	
9+9+12	9	9	12	2.40	2.40	3.20	2.77	8.00	8.69	0.66	2.15	2.53	3.72	
9+12+12	9	12	12	2.18	2.91	2.91	2.77	8.00	8.69	0.66	2.15	2.53	3.72	



TAVOLE DI CONFIGURAZIONE - UNITA' ESTERNA MULTI 28Kbtu R410A

RAFFREDDAMENTO

Comb.	Funzionam.	Combinazioni (x1000 Btu/h)				Capacità Individuale Nominale (kW)				Capacità Totale Erogata (kW)			Potenza Totale Assorbita (kW)			EER (W/W)	
		Unità A	Unità B	Unità C	Unità D	Unità A	Unità B	Unità C	Unità D	Min.	Rated	Max.	Min.	Rated	Max.		
1:1	7	7	—	—	—	2.00	—	—	—	1.52	2.00	2.90	0.40	0.62	0.78	3.21	
	9	9	—	—	—	2.50	—	—	—	1.52	2.50	3.20	0.40	0.78	0.97	3.21	
	12	12	—	—	—	3.50	—	—	—	1.52	3.50	3.90	0.40	1.09	1.31	3.21	
	18	18	—	—	—	5.00	—	—	—	1.72	5.00	6.50	0.50	1.55	1.79	3.22	
1:2	7+7	7	7	—	—	2.10	2.10	—	—	2.05	4.20	6.08	0.62	1.31	1.98	3.21	
	7+9	7	9	—	—	2.06	2.64	—	—	2.05	4.70	6.40	0.62	1.46	2.10	3.21	
	7+12	7	12	—	—	1.95	3.35	—	—	2.05	5.30	6.81	0.62	1.65	2.23	3.21	
	7+18	7	18	—	—	1.96	5.04	—	—	2.05	7.00	7.55	0.62	2.18	2.72	3.21	
	9+9	9	9	—	—	2.65	2.65	—	—	2.05	5.30	6.81	0.62	1.65	2.23	3.21	
	9+12	9	12	—	—	2.57	3.43	—	—	2.05	6.00	6.98	0.62	1.87	2.35	3.21	
	9+18	9	18	—	—	2.43	4.87	—	—	2.05	7.30	7.55	0.62	2.27	2.72	3.21	
	12+12	12	12	—	—	3.25	3.25	—	—	2.05	6.50	7.39	0.62	2.02	2.42	3.21	
	12+18	12	18	—	—	2.92	4.38	—	—	2.05	7.30	7.55	0.62	2.27	2.72	3.21	
	18+18	18	18	—	—	3.75	3.75	—	—	2.05	7.50	7.55	0.62	2.34	2.72	3.21	
	1:3	7+7+7	7	7	7	—	2.00	2.00	2.00	—	2.63	6.00	8.46	0.74	1.85	2.87	3.25
		7+7+9	7	7	9	—	1.98	1.98	2.54	—	2.63	6.50	8.46	0.74	2.00	2.87	3.25
7+7+12		7	7	12	—	1.91	1.91	3.28	—	2.63	7.10	8.46	0.74	2.18	2.87	3.25	
7+7+18		7	7	18	—	1.71	1.71	4.39	—	2.63	7.80	8.46	0.74	2.40	2.87	3.25	
7+9+9		7	9	9	—	1.90	2.45	2.68	—	2.63	6.80	8.46	0.74	2.09	2.87	3.25	
7+9+12		7	9	12	—	1.88	2.41	3.21	—	2.63	7.50	8.46	0.74	2.31	2.87	3.25	
7+9+18		7	9	18	—	1.61	2.06	4.13	—	2.63	7.80	8.46	0.74	2.40	2.87	3.25	
7+12+12		7	12	12	—	1.76	3.02	3.02	—	2.63	7.80	8.46	0.74	2.40	2.87	3.25	
9+9+9		9	9	9	—	2.37	2.37	2.37	—	2.63	7.10	8.46	0.74	2.18	2.87	3.25	
9+9+12		9	9	12	—	2.34	2.34	3.12	—	2.63	7.80	8.46	0.74	2.40	2.87	3.25	
9+9+18		9	9	18	—	1.95	1.95	3.90	—	2.63	7.80	8.46	0.74	2.40	2.87	3.25	
9+12+12		9	12	12	—	2.13	2.84	2.84	—	2.63	7.80	8.46	0.74	2.40	2.87	3.25	
1:4	7+7+7+7	7	7	7	7	2.05	2.05	2.05	2.05	3.04	8.21	9.93	0.84	2.47	3.09	3.32	
	7+7+7+9	7	7	7	9	1.92	1.92	1.92	2.46	3.04	8.21	9.93	0.84	2.47	3.09	3.32	
	7+7+7+12	7	7	7	12	1.74	1.74	1.74	2.99	3.04	8.21	9.93	0.84	2.47	3.09	3.32	
	7+7+9+9	7	7	9	9	1.80	1.80	2.31	2.31	3.04	8.21	9.93	0.84	2.47	3.09	3.32	
	7+7+9+12	7	7	9	12	1.64	1.64	2.11	2.11	3.04	8.21	9.93	0.84	2.49	3.09	3.30	
	7+9+9+9	7	9	9	9	1.69	2.17	2.17	2.17	3.04	8.21	9.93	0.84	2.48	3.09	3.31	
	9+9+9+9	9	9	9	9	2.05	2.05	2.05	2.05	3.04	8.21	9.93	0.84	2.50	3.09	3.29	

RISCALDAMENTO

Comb.	Indoor Units	Combinazioni (x1000 Btu/h)				Capacità Individuale Nominale (kW)				Capacità Totale Erogata (kW)			Potenza Totale Assorbita (kW)			COP (W/W)	
		Unità A	Unità B	Unità C	Unità D	Unità A	Unità B	Unità C	Unità D	Min.	Nominale	Max.	Min.	Nominale	Max.		
1:1	7	7	—	—	—	2.50	—	—	—	1.68	2.50	2.90	0.40	0.69	0.87	3.61	
	9	9	—	—	—	3.00	—	—	—	1.68	3.00	3.20	0.40	0.83	1.04	3.61	
	12	12	—	—	—	3.80	—	—	—	1.68	3.80	3.90	0.40	1.05	1.26	3.61	
	18	18	—	—	—	5.60	—	—	—	1.91	5.60	7.01	0.50	1.55	1.78	3.61	
1:2	7+7	7	7	—	—	2.50	2.50	—	—	2.28	5.00	6.73	0.61	1.39	1.96	3.61	
	7+9	7	9	—	—	2.45	3.15	—	—	2.28	5.60	7.10	0.61	1.55	2.08	3.61	
	7+12	7	12	—	—	2.21	3.79	—	—	2.28	6.00	7.55	0.61	1.66	2.20	3.61	
	7+18	7	18	—	—	2.18	5.62	—	—	2.28	7.80	8.37	0.61	2.16	2.69	3.61	
	9+9	9	9	—	—	3.00	3.00	—	—	2.28	6.00	7.55	0.61	1.66	2.20	3.61	
	9+12	9	12	—	—	3.00	4.00	—	—	2.28	7.00	7.74	0.61	1.94	2.32	3.61	
	9+18	9	18	—	—	2.63	5.27	—	—	2.28	7.90	8.37	0.61	2.19	2.69	3.61	
	12+12	12	12	—	—	3.75	3.75	—	—	2.28	7.50	8.19	0.61	2.08	2.40	3.61	
	12+18	12	18	—	—	3.20	4.80	—	—	2.28	8.00	8.37	0.61	2.22	2.69	3.61	
	18+18	18	18	—	—	4.00	4.00	—	—	2.28	8.00	8.37	0.61	2.22	2.69	3.61	
	1:3	7+7+7	7	7	7	—	2.33	2.33	2.33	—	2.91	7.00	9.37	0.73	1.92	2.84	3.65
		7+7+9	7	7	9	—	2.37	2.37	3.05	—	2.91	7.80	9.37	0.73	2.14	2.84	3.65
7+7+12		7	7	12	—	2.29	2.29	3.92	—	2.91	8.50	9.37	0.73	2.28	2.84	3.73	
7+7+18		7	7	18	—	1.93	1.93	4.95	—	2.91	8.80	9.37	0.73	2.37	2.84	3.72	
7+9+9		7	9	9	—	2.38	3.06	2.68	—	2.91	8.50	9.37	0.73	2.28	2.84	3.73	
7+9+12		7	9	12	—	2.20	2.83	3.77	—	2.91	8.80	9.37	0.73	2.36	2.84	3.73	
7+9+18		7	9	18	—	1.81	2.33	4.66	—	2.91	8.80	9.37	0.73	2.37	2.84	3.72	
7+12+12		7	12	12	—	1.99	3.41	3.41	—	2.91	8.80	9.37	0.73	2.36	2.84	3.73	
9+9+9		9	9	9	—	2.93	2.93	2.93	—	2.91	8.80	9.37	0.73	2.36	2.84	3.73	
9+9+12		9	9	12	—	2.64	2.64	3.52	—	2.91	8.80	9.37	0.73	2.36	2.84	3.73	
9+9+18		9	9	18	—	2.20	2.20	4.40	—	2.91	8.80	9.37	0.73	2.37	2.84	3.72	
9+12+12		9	12	12	—	2.40	3.20	3.20	—	2.91	8.80	9.37	0.73	2.37	2.84	3.72	
1:4	7+7+7+7	7	7	7	7	2.28	2.28	2.28	2.28	3.37	9.10	11.01	0.83	2.45	3.06	3.72	
	7+7+7+9	7	7	7	9	2.12	2.12	2.12	2.73	3.37	9.10	11.01	0.83	2.45	3.06	3.72	
	7+7+7+12	7	7	7	12	1.93	1.93	1.93	3.31	3.37	9.10	11.01	0.83	2.45	3.06	3.72	
	7+7+9+9	7	7	9	9	1.99	1.99	2.56	2.56	3.37	9.10	11.01	0.83	2.45	3.06	3.72	
	7+7+9+12	7	7	9	12	1.82	1.82	2.34	3.12	3.37	9.10	11.01	0.83	2.45	3.06	3.72	
	7+9+9+9	7	9	9	9	1.87	2.41	2.41	2.41	3.37	9.10	11.01	0.83	2.45	3.06	3.72	
	9+9+9+9	9	9	9	9	2.28	2.28	2.28	2.28	3.37	9.10	11.01	0.83	2.45	3.06	3.72	



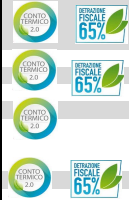
TAVOLE DI CONFIGURAZIONE - UNITA' ESTERNA MULTI 36Kbtu R410A

RAFFREDDAMENTO

Comb.	Funzionam.	Combinazioni (x1000 Btu/h)				Capacità Individuale Nominale (kW)				Capacità Totale Erogata (kW)			Potenza Totale Assorbita (kW)			EER (W/W)
		Unità A	Unità B	Unità C	Unità D	Unità A	Unità B	Unità C	Unità D	Min.	Rated	Max.	Min.	Rated	Max.	
1:1	7	7	—	—	—	2.00	—	—	—	1.59	2.00	2.90	0.45	0.62	0.78	3.21
	9	9	—	—	—	2.50	—	—	—	1.59	2.50	3.20	0.45	0.78	0.97	3.21
	12	12	—	—	—	3.50	—	—	—	1.59	3.50	3.90	0.45	1.09	1.31	3.21
	18	18	—	—	—	5.00	—	—	—	1.80	5.00	6.50	0.58	1.56	1.79	3.21
1:2	7+7	7	7	—	—	2.10	2.10	—	—	2.23	4.20	6.36	0.63	1.31	2.15	3.21
	7+9	7	9	—	—	2.06	2.64	—	—	2.23	4.70	6.57	0.63	1.46	2.31	3.21
	7+12	7	12	—	—	2.03	3.47	—	—	2.23	5.50	6.89	0.63	1.71	2.48	3.21
	7+18	7	18	—	—	1.96	5.04	—	—	2.23	7.00	8.48	0.63	2.18	2.91	3.21
	9+9	9	9	—	—	2.65	2.65	—	—	2.23	5.30	6.89	0.63	1.65	2.48	3.21
	9+12	9	12	—	—	2.57	3.43	—	—	2.23	6.00	7.42	0.63	1.87	2.64	3.21
	9+18	9	18	—	—	2.50	5.00	—	—	2.23	7.50	9.54	0.63	2.34	2.97	3.21
	12+12	12	12	—	—	3.50	3.50	—	—	2.23	7.00	7.95	0.63	2.18	2.81	3.21
	12+18	12	18	—	—	3.40	5.10	—	—	2.23	8.50	10.07	0.63	2.65	2.97	3.21
	18+18	18	18	—	—	5.00	5.00	—	—	2.23	10.00	10.60	0.63	3.12	3.30	3.21
1:3	7+7+7	7	7	7	—	2.00	2.00	2.00	—	2.86	6.00	7.42	0.79	1.85	2.97	3.25
	7+7+9	7	7	9	—	1.98	1.98	2.54	—	2.86	6.50	7.95	0.79	2.01	3.14	3.23
	7+7+12	7	7	12	—	2.02	2.02	3.46	—	2.86	7.50	9.01	0.79	2.33	3.30	3.22
	7+7+18	7	7	18	—	1.97	1.97	5.06	—	2.86	9.00	11.66	0.79	2.80	3.63	3.21
	7+9+9	7	9	9	—	1.96	2.52	2.52	—	2.86	7.00	9.01	0.79	2.17	3.30	3.23
	7+9+12	7	9	12	—	2.00	2.57	3.43	—	2.86	8.00	10.07	0.79	2.48	3.47	3.22
	7+9+18	7	9	18	—	1.96	2.51	5.03	—	2.86	9.50	11.66	0.79	2.96	3.63	3.21
	7+12+12	7	12	12	—	2.03	3.48	3.48	—	2.86	9.00	10.60	0.79	2.80	3.47	3.21
	7+12+18	7	12	18	—	1.89	3.24	4.86	—	2.86	10.00	11.66	0.79	3.12	3.63	3.21
	7+18+18	7	18	18	—	1.63	4.19	4.19	—	2.86	10.00	11.66	0.79	3.12	3.63	3.21
	9+9+9	9	9	9	—	2.50	2.50	2.50	—	2.86	7.50	10.07	0.79	2.34	3.47	3.21
	9+9+12	9	9	12	—	2.55	2.55	3.40	—	2.86	8.50	10.60	0.79	2.65	3.47	3.21
	9+9+18	9	9	18	—	2.50	2.50	5.00	—	2.86	10.00	11.66	0.79	3.12	3.63	3.21
	9+12+12	9	12	12	—	2.59	3.45	3.45	—	2.86	9.50	11.66	0.79	2.96	3.63	3.21
	9+12+18	9	12	18	—	2.31	3.08	4.62	—	2.86	10.00	11.66	0.79	3.12	3.63	3.21
	9+18+18	9	18	18	—	2.00	4.00	4.00	—	2.86	10.00	11.66	0.79	3.12	3.63	3.21
	12+12+12	12	12	12	—	3.33	3.33	3.33	—	2.86	10.00	11.66	0.79	3.12	3.63	3.21
	12+12+18	12	12	18	—	2.86	2.86	4.29	—	2.86	10.00	11.66	0.79	3.12	3.63	3.21
1:4	7+7+7+7	7	7	7	7	2.05	2.05	2.05	2.05	3.71	8.20	10.60	0.89	2.30	3.30	3.56
	7+7+7+9	7	7	7	9	1.98	1.98	1.98	2.55	3.71	8.50	11.66	0.89	2.50	3.47	3.40
	7+7+7+12	7	7	7	12	2.02	2.02	2.02	3.45	3.71	9.50	12.72	0.89	2.88	3.63	3.30
	7+7+7+18	7	7	7	18	1.88	1.88	1.88	4.85	3.71	10.50	13.78	0.89	3.27	4.29	3.21
	7+7+9+9	7	7	9	9	1.97	1.97	2.53	2.53	3.71	9.00	12.72	0.89	2.73	3.63	3.30
	7+7+9+12	7	7	9	12	2.00	2.00	2.57	3.43	3.71	10.00	13.25	0.89	3.12	3.96	3.21
	7+7+9+18	7	7	9	18	1.79	1.79	2.30	4.61	3.71	10.50	13.78	0.89	3.27	4.29	3.21
	7+7+12+12	7	7	12	12	1.93	1.93	3.32	3.32	3.71	10.50	13.78	0.89	3.27	4.29	3.21
	7+7+12+18	7	7	12	18	1.67	1.67	2.86	4.30	3.71	10.50	13.78	0.89	3.27	4.29	3.21
	7+9+9+9	7	9	9	9	1.96	2.51	2.51	2.51	3.71	9.50	13.25	0.89	2.94	3.80	3.23
	7+9+9+12	7	9	9	12	2.01	2.58	2.58	3.44	3.71	10.60	13.78	0.89	3.30	4.29	3.21
	7+9+9+18	7	9	9	18	1.73	2.22	2.22	4.44	3.71	10.60	13.78	0.89	3.30	4.29	3.21
	7+9+12+12	7	9	12	12	1.86	2.39	3.18	3.18	3.71	10.60	13.78	0.89	3.30	4.29	3.21
	7+9+12+18	7	9	12	18	1.61	2.07	2.77	4.15	3.71	10.60	13.78	0.89	3.30	4.29	3.21
	7+12+12+12	7	12	12	12	1.73	2.96	2.96	2.96	3.71	10.60	13.78	0.89	3.30	4.29	3.21
	9+9+9+9	9	9	9	9	2.65	2.65	2.65	2.65	3.71	10.60	13.78	0.89	3.30	4.29	3.21
	9+9+9+12	9	9	9	12	2.45	2.45	2.45	3.26	3.71	10.60	13.78	0.89	3.30	4.29	3.21
	9+9+9+18	9	9	9	18	2.12	2.12	2.12	4.24	3.71	10.60	13.78	0.89	3.30	4.29	3.21
	9+9+12+12	9	9	12	12	2.27	2.27	3.03	3.03	3.71	10.60	13.78	0.89	3.30	4.29	3.21
	9+12+12+12	9	12	12	12	2.12	2.83	2.83	2.83	3.71	10.60	13.78	0.89	3.30	4.29	3.21

RISCALDAMENTO

Comb.	Indoor Units	Combinazioni (x1000 Btu/h)				Capacità Individuale Nominale (kW)				Capacità Totale Erogata (kW)			Potenza Totale Assorbita (kW)			COP (W/W)
		Unità A	Unità B	Unità C	Unità D	Unità A	Unità B	Unità C	Unità D	Min.	Nominale	Max.	Min.	Nominale	Max.	
1:1	7	7	—	—	—	2.50	—	—	—	1.80	2.50	2.90	0.45	0.69	0.86	3.62
	9	9	—	—	—	3.00	—	—	—	1.80	3.00	3.20	0.45	0.83	1.04	3.62
	12	12	—	—	—	3.80	—	—	—	1.80	3.80	3.90	0.45	1.05	1.26	3.62
	18	18	—	—	—	5.60	—	—	—	2.04	5.60	7.00	0.55	1.55	1.78	3.61
1:2	7+7	7	7	—	—	2.50	2.50	—	—	2.52	5.00	7.20	0.63	1.38	2.15	3.63
	7+9	7	9	—	—	2.45	3.15	—	—	2.52	5.60	7.44	0.63	1.54	2.31	3.63
	7+12	7	12	—	—	2.21	3.79	—	—	2.52	6.00	7.80	0.63	1.65	2.48	3.63
	7+18	7	18	—	—	2.24	5.76	—	—	2.52	8.00	9.60	0.63	2.21	2.91	3.62
	9+9	9	9	—	—	3.00	3.00	—	—	2.52	6.00	7.80	0.63	1.65	2.48	3.63
	9+12	9	12	—	—	3.00	4.00	—	—	2.52	7.00	8.40	0.63	1.93	2.64	3.63
	9+18	9	18	—	—	2.93	5.87	—	—	2.52	8.80	10.80	0.63	2.43	2.98	3.62
	12+12	12	12	—	—	3.75	3.75	—	—	2.52	7.50	9.00	0.63	2.07	2.81	3.62
	12+18	12	18	—	—	3.76	5.64	—	—	2.52	9.40	11.40	0.63	2.60	2.98	3.62
	18+18	18	18	—	—	5.50	5.50	—	—	2.52	11.00	12.00	0.63	3.05	3.31	3.61
	7+7+7	7	7	7	—	2.50	2.50	2.50	—	3.24	7.50	8.40	0.79	2.05	2.98	3.65
	7+7+9	7	7	9	—	2.37	2.37	3.05	—	3.24	7.80	9.00	0.79	2.14	3.14	3.65
7+7+12	7	7	12	—	2.29	2.29	3.92	—	3.24	8.50	10.20	0.79	2.33	3.31	3.65	
7+7+18	7	7	18	—	2.52	2.52	6.47	—	3.24	11.50	13.20	0.79	3.17	3.64	3.63	
7+9+9	7	9	9	—	2.38	3.06	3.06	—	3.24	8.50	10.20	0.79	2.33	3.31	3.65	
7+9+12	7	9	12	—	2.50	3.21	4.29	—	3.24	10.00	11.40	0.79	2.74	3.47	3.65	
7+9+18	7	9	18	—	2.37	3.04	6.09	—	3.24	11.50	13.20	0.79	3.17	3.64	3.63	
7+12+12	7	12	12	—	2.48	4.26	4.26	—	3.24	11.00	12.00	0.79	3.03	3.47	3.63	
7+12+18	7	12	18	—	2.18	3.73	5.59	—	3.24	11.50	13.20	0.79	3.18	3.64	3.62	
7+18+18	7	18	18	—	1.87	4.81	4.81	—	3.24	11.50	13.20	0.79	3.19	3.64	3.61	
9+9+9	9	9	9	—	3.33	3.33	3.33	—	3.24	10.00	11.40	0.79	2.75	3.47	3.63	
9+9+12	9	9	12	—	3.30	3.30	4.40	—	3.24	11.00	12.00	0.79	3.03	3.47	3.63	
9+9+18	9	9	18	—	2.88	2.88	5.75	—	3.24	11.50	13.20	0.79	3.19	3.64	3.61	
9+12+12	9	12	12	—	3.14	4.18	4.18	—	3.24	11.50	13.20	0.79	3.17	3.64	3.63	
9+12+18	9	12	18	—	2.65	3.54	5.31	—	3.24	11.50	13.20	0.79	3.18	3.64	3.62	
9+18+18	9	18	18	—	2.30	4.60	4.60	—	3.24	11.50	13.20	0.79	3.19	3.64	3.61	
12+12+12	12	12	12	—	3.83	3.83	3.83	—	3.24	11.50	13.20	0.79	3.17	3.64	3.63	
12+12+18	12	12	18	—	3.29	3.29	4.93	—	3.24	11.50	13.20	0.79	3.19	3.64	3.61	
7+7+7+7	7	7	7	7	2.50	2.50	2.50	2.50	4.20	10.00	12.00	0.89	2.59	3.31	3.86	
7+7+7+9	7	7	7	9	2.57	2.57	2.57	3.30	4.20	11.00	12.60	0.89	2.93	3.47	3.75	
7+7+7+12	7	7	7	12	2.50	2.50	2.50	4.29	4.20	11.80	13.20	0.89	3.19	3.64	3.70	
7+7+7+18	7	7	7	18	2.15	2.15	2.15	5.54	4.20	12.00	14.40	0.89	3.29	4.30	3.65	
7+7+9+9	7	7	9	9	2.58	2.58	3.32	3.32	4.20	11.80	13.20	0.89	3.19	3.64	3.70	
7+7+9+12	7	7	9	12	2.40	2.40	3.09	4.11	4.20	12.00	13.80	0.89	3.24	3.97	3.70	
7+7+9+18	7	7	9	18	2.05	2.05	2.63	5.27	4.20	12.00	14.40	0.89	3.31	4.30	3.63	
7+7+12+12	7	7	12	12	2.21	2.21	3.79	3.79	4.20	12.00	14.40	0.89	3.29	4.30	3.65	
7+7+12+18	7	7	12	18	1.91	1.91	3.27	4.91	4.20	12.00	14.40	0.89	3.31	4.30	3.63	
7+9+9+9	7	9	9	9	2.47	3.18	3.18	3.18	4.20	12.00	13.80	0.89	3.24	3.80	3.70	
7+9+9+12	7	9	9	12	2.27	2.92	2.92	3.89	4.20	12.00	14.40	0.89	3.30	4.30	3.64	
7+9+9+18	7	9	9	18	1.95	2.51	2.51	5.02	4.20	12.00	14.40	0.89	3.31	4.30	3.63	
7+9+12+12	7	9	12	12	2.10	2.70	3.60	3.60	4.20	12.00	14.40	0.89	3.30	4.30	3.64	
7+9+12+18	7	9	12	18	1.83	2.35	3.13	4.70	4.20	12.00	14.40	0.89	3.31	4.30	3.63	
7+12+12+12	7	12	12	12	1.95	3.35	3.35	3.35	4.20	12.00	14.40	0.89	3.31	4.30	3.63	
7+12+12+18	7	12	12	18	1.71	2.94	2.94	4.41	4.20	12.00	14.40	0.89	3.31	4.30	3.63	
9+9+9+9	9	9	9	9	3.00	3.00	3.00	3.00	4.20	12.00	14.40	0.89	3.31	4.30	3.63	
9+9+9+12	9	9	9	12	2.77	2.77	2.77	3.69	4.20	12.00	14.40	0.89	3.31	4.30	3.63	
9+9+9+18	9	9	9	18	2.40	2.40	2.40	4.80	4.20	12.00	14.40	0.89	3.31	4.30	3.63	
9+9+12+12	9	9	12	12	2.57	2.57	3.43	3.43	4.20	12.00	14.40	0.89	3.31	4.30	3.63	
9+12+12+12	9	12	12	12	2.40	3.20	3.20	3.20	4.20	12.00	14.40	0.89	3.31	4.30	3.63	



TAVOLE DI CONFIGURAZIONE - UNITA' ESTERNA MULTI 42Kbtu R410A

RAFFREDDAMENTO

Comb.	Funzionam.	Combinazioni (x1000 Btu/h)					Capacità Individuale Nominale (kW)					Capacità Totale Erogata (kW)			Potenza Totale Assorbita (kW)			EER (W/W)
		Unità A	Unità B	Unità C	Unità D	Unità E	Unità A	Unità B	Unità C	Unità D	Unità E	Min.	Rated	Max.	Min.	Rated	Max.	
1.1	7	7	---	---	---	---	2.00	---	---	---	---	1.66	2.00	2.90	0.45	0.62	0.78	3.22
	9	9	---	---	---	---	2.50	---	---	---	---	1.66	2.50	3.20	0.45	0.78	0.97	3.22
	12	12	---	---	---	---	3.50	---	---	---	---	1.66	3.50	3.90	0.45	1.09	1.30	3.22
	18	18	---	---	---	---	5.00	---	---	---	---	1.85	5.00	6.50	0.58	1.56	1.79	3.21
	24	24	---	---	---	---	7.00	---	---	---	---	2.09	7.00	8.20	0.70	2.18	2.29	3.21
	7+7	7	7	---	---	---	2.10	2.10	---	---	---	2.34	4.20	7.38	0.63	1.30	2.16	3.23
	7+9	7	9	---	---	---	2.06	2.64	---	---	---	2.34	4.70	7.63	0.63	1.46	2.31	3.23
	7+12	7	12	---	---	---	2.03	3.47	---	---	---	2.34	5.50	8.00	0.63	1.70	2.50	3.23
	7+18	7	18	---	---	---	1.96	5.04	---	---	---	2.34	7.00	9.84	0.63	2.17	2.65	3.23
	7+24	7	24	---	---	---	2.05	7.05	---	---	---	2.34	9.10	11.69	0.63	2.83	2.98	3.21
	9+9	9	9	---	---	---	2.65	2.65	---	---	---	2.34	5.30	8.00	0.63	1.64	2.50	3.23
	9+12	9	12	---	---	---	2.57	3.43	---	---	---	2.34	6.00	8.61	0.63	1.86	2.53	3.23
	9+18	9	18	---	---	---	2.50	5.00	---	---	---	2.34	7.50	11.07	0.63	2.34	2.80	3.21
	9+24	9	24	---	---	---	2.65	7.05	---	---	---	2.34	9.70	12.30	0.63	3.02	3.17	3.21
	12+12	12	12	---	---	---	3.50	3.50	---	---	---	2.34	7.00	9.23	0.63	2.17	2.65	3.23
	12+18	12	18	---	---	---	3.40	5.10	---	---	---	2.34	8.50	11.69	0.63	2.65	3.06	3.21
	12+24	12	24	---	---	---	3.33	6.67	---	---	---	2.34	10.00	12.30	0.63	3.12	3.35	3.21
	18+18	18	18	---	---	---	5.25	5.25	---	---	---	2.34	10.50	12.30	0.63	3.27	3.35	3.21
	18+24	18	24	---	---	---	4.93	6.57	---	---	---	2.34	11.50	12.50	0.63	3.58	3.35	3.21
	24+24	24	24	---	---	---	6.00	6.00	---	---	---	2.34	12.00	12.50	0.63	3.74	3.35	3.21
	7+7+7	7	7	7	---	---	2.00	2.00	2.00	---	---	2.89	6.00	7.38	0.78	1.85	2.98	3.25
	7+7+9	7	7	9	---	---	1.98	1.98	2.54	---	---	2.89	6.50	8.61	0.78	2.00	3.17	3.25
	7+7+12	7	7	12	---	---	2.02	2.02	3.46	---	---	2.89	7.50	9.23	0.78	2.31	3.35	3.25
	7+7+18	7	7	18	---	---	1.97	1.97	5.06	---	---	2.89	9.00	11.07	0.78	2.78	3.54	3.24
	7+7+24	7	7	24	---	---	2.03	2.03	6.95	---	---	2.89	11.00	12.92	0.78	3.42	3.73	3.22
	7+9+9	7	9	9	---	---	1.96	2.52	2.52	---	---	2.89	7.00	9.23	0.78	2.15	3.28	3.25
	7+9+12	7	9	12	---	---	2.00	2.57	3.43	---	---	2.89	8.00	10.46	0.78	2.46	3.43	3.25
	7+9+18	7	9	18	---	---	1.96	2.51	5.03	---	---	2.89	9.50	11.07	0.78	2.93	3.65	3.24
	7+9+24	7	9	24	---	---	2.01	2.59	6.90	---	---	2.89	11.50	12.92	0.78	3.57	3.88	3.22
	7+12+12	7	12	12	---	---	2.03	3.48	3.48	---	---	2.89	9.00	11.07	0.78	2.78	3.54	3.24
	7+12+18	7	12	18	---	---	1.99	3.41	5.11	---	---	2.89	10.50	12.30	0.78	3.26	3.73	3.22
	7+12+24	7	12	24	---	---	1.87	3.21	6.42	---	---	2.89	11.50	12.92	0.78	3.57	3.88	3.22
	7+18+18	7	18	18	---	---	1.87	4.81	4.81	---	---	2.89	11.50	12.92	0.78	3.57	3.88	3.22
	9+9+9	9	9	9	---	---	2.67	2.67	2.67	---	---	2.89	8.00	10.46	0.78	2.46	3.73	3.25
	9+9+12	9	9	12	---	---	2.70	2.70	3.60	---	---	2.89	9.00	12.92	0.78	2.78	3.54	3.24
	9+9+18	9	9	18	---	---	2.63	2.63	6.57	---	---	2.89	10.50	12.92	0.78	3.28	3.73	3.22
	9+9+24	9	9	24	---	---	2.46	2.46	9.50	---	---	2.89	11.50	12.92	0.78	3.57	3.88	3.22
	9+12+12	9	12	12	---	---	2.45	3.27	3.27	---	---	2.89	9.00	11.07	0.78	2.78	3.54	3.24
	9+12+18	9	12	18	---	---	2.54	3.38	5.08	---	---	2.89	11.00	11.69	0.78	3.42	3.73	3.22
	9+12+24	9	12	24	---	---	2.30	3.07	6.13	---	---	2.89	11.50	12.92	0.78	3.57	3.88	3.22
	9+18+18	9	18	18	---	---	2.40	4.80	4.80	---	---	2.89	12.00	12.92	0.78	3.74	3.88	3.22
	12+12+12	12	12	12	---	---	3.17	3.17	3.17	---	---	2.89	9.50	11.07	0.78	2.93	3.55	3.24
	12+12+18	12	12	18	---	---	3.29	3.29	4.93	---	---	2.89	11.50	12.92	0.78	3.57	3.88	3.22
	12+12+24	12	12	24	---	---	3.00	3.00	6.00	---	---	2.89	12.00	12.92	0.78	3.74	3.88	3.21
	12+18+18	12	18	18	---	---	3.00	4.50	4.50	---	---	2.89	12.00	12.92	0.78	3.74	3.88	3.21
	12+18+24	12	18	24	---	---	2.67	4.00	5.33	---	---	2.89	12.00	12.92	0.78	3.74	3.88	3.21
	18+18+18	18	18	18	---	---	4.00	4.00	4.00	---	---	2.89	12.00	12.92	0.78	3.74	3.88	3.21
	7+7+7	7	7	7	---	---	2.00	2.00	2.00	2.00	---	3.69	8.00	10.60	0.89	2.46	3.55	3.26
	7+7+9	7	7	9	---	---	1.98	1.98	2.55	2.55	---	3.69	8.50	11.07	0.89	2.92	3.65	3.25
	7+7+12	7	7	12	---	---	2.02	2.02	3.45	3.45	---	3.69	9.50	11.69	0.89	2.92	3.65	3.25
	7+7+18	7	7	18	---	---	2.06	2.06	5.31	5.31	---	3.69	11.50	12.30	0.89	3.57	4.10	3.22
	7+7+24	7	7	24	---	---	1.87	1.87	6.40	6.40	---	3.69	12.00	13.53	0.89	3.74	4.29	3.21
	7+7+9+9	7	7	9	9	---	2.08	2.08	2.67	2.67	---	3.69	9.50	11.69	0.89	2.92	3.65	3.25
	7+7+9+12	7	7	9	12	---	2.00	2.00	2.57	3.43	---	3.69	10.00	12.30	0.89	3.08	4.10	3.22
	7+7+9+18	7	7	9	18	---	1.96	1.96	2.52	5.05	---	3.69	11.50	12.30	0.89	3.57	4.10	3.22
	7+7+9+24	7	7	9	24	---	1.79	1.79	2.30	6.13	---	3.69	12.00	13.53	0.89	3.74	4.29	3.21
	7+7+12+12	7	7	12	12	---	1.93	1.93	3.32	3.32	---	3.69	10.50	12.92	0.89	3.25	4.10	3.23
	7+7+12+18	7	7	12	18	---	1.83	1.83	3.14	4.70	---	3.69	11.50	13.53	0.89	3.57	4.10	3.22
	7+7+12+24	7	7	12	24	---	1.72	1.72	2.95	5.90	---	3.69	12.30	13.53	0.89	3.83	4.29	3.21
	7+7+18+18	7	7	18	18	---	1.72	1.72	4.43	4.43	---	3.69	12.30	13.53	0.89	3.83	4.29	3.21
	7+7+18+24	7	7	18	24	---	1.54	1.54	3.65	5.27	---	3.69	12.30	13.53	0.89	3.83	4.29	3.21
	7+9+9+9	7	9	9	9	---	2.06	2.65	2.65	2.65	---	3.69	10.00	12.30	0.89	3.08	4.10	3.25
	7+9+9+12	7	9	9	12	---	1.99	2.55	2.55	3.41	---	3.69	10.50	12.92	0.89	3.25	4.10	3.23
	7+9+9+18	7	9	9	18	---	1.87	2.41	2.41	4.81	---	3.69	11.50	13.53	0.89	3.57	4.10	3.22
	7+9+9+24	7	9	9	24	---	1.76	2.26	2.26	6.02	---	3.69	12.30	13.53	0.89	3.83	4.29	3.21
	7+9+12+12	7	9	12	12	---	2.01	2.59	3.45	3.45	---	3.69	11.50	13.53	0.89	3.57	4.10	3.22
	7+9+12+18	7	9	12	18	---	1.83	2.35	2.35	4.73	---	3.69	12.00	13.53	0.89	3.83	4.29	3.21
	7+9+12+24	7	9	12	24	---	1.66	2.13	2.84	5.68	---	3.69	12.30	13.53	0.89	3.83	4.29	3.21
	7+9+18+18	7	9	18	18	---	1.66	2.13	4.26	4.26	---	3.69	12.30	13.53	0.89	3.83	4.29	3.21
	7+9+18+24	7	9	18	24	---	1.48	1.91	3.82	5.09	---	3.69	12.30	13.53	0.89	3.83	4.29	3.21
	7+12+12+12	7	12	12	12	---	1.87	3.21	3.21	3.21	---	3.69	11.50	13.53	0.89	3.57	4.10	3.22
	7+12+12+18	7	12	12	18	---	1.71	2.94	2.94	4.41	---	3.69	12.00	13.53	0.89	3.74	4.29	3.21
	7+12+18+18	7	12	18	18	---	1.57	2.68	2.68	5.37	---	3.69	12.30	13.53	0.89	3.83	4.29	3.21
	7+12+18+24	7	12	18	24	---	1.57	2.68	4.03	4.03	---	3.69	12.30	13.53	0.89	3.83	4.29	3.21
	9+9+9+9	9	9	9	9	---	2.63	2.63	2.63	2.63	---	3.69	10.50	12.92	0.89	3.25	4.10	3.23
	9+9+9+12	9	9	9	12	---	2.65	2.65	2.65	3.54	---	3.69	11.50	13.53	0.89	3.57	4.10	3.22
	9+9+9+18	9	9	9	18	---	2.40	2.40	2.40	4.80	---	3.69	12.00	13.53	0.89	3.74	4.29	3.21
	9+9+9+24	9	9	9	24	---	2.17	2.17	2.17	5.79	---	3.69	12.30	13.53	0.89	3.83	4.29	3.21
	9+9+12+12	9	9	12	12	---	2.46	3.29	3.29									

RISCALDAMENTO

Comb.	Indoor Units	Combinazioni (x1000 Br/h)					Capacità Individuale Nominale (kW)					Capacità Totale Erogata (kW)			Potenza Totale Assorbita (kW)			COP (W/W)
		Unità A	Unità B	Unità C	Unità D	Unità E	Unità A	Unità B	Unità C	Unità D	Unità E	Min	Nominale	Max	Min	Nominale	Max	
1.1	7	7	---	---	---	---	2.50	---	---	---	---	1.66	2.50	2.90	0.45	0.69	0.87	3.61
	9	9	---	---	---	---	3.00	---	---	---	---	1.66	3.00	3.20	0.45	0.83	1.04	3.61
	12	12	---	---	---	---	3.80	---	---	---	---	1.66	3.80	3.90	0.45	1.05	1.26	3.61
	18	18	---	---	---	---	5.60	---	---	---	---	1.85	5.60	7.00	0.58	1.55	1.78	3.61
	24	24	---	---	---	---	7.60	---	---	---	---	2.09	7.60	8.50	0.70	2.10	2.20	3.62
	7+7	7	7	---	---	---	2.50	2.50	---	---	---	2.34	5.00	7.38	0.57	1.38	1.95	3.63
	7+9	7	9	---	---	---	2.45	3.15	---	---	---	2.34	5.60	7.63	0.57	1.54	2.09	3.63
	7+12	7	12	---	---	---	2.21	3.79	---	---	---	2.34	6.00	8.00	0.57	1.65	2.26	3.63
	7+18	7	18	---	---	---	2.24	5.76	---	---	---	2.34	8.00	9.84	0.57	2.20	2.39	3.63
	7+24	7	24	---	---	---	2.21	7.59	---	---	---	2.34	9.80	11.69	0.57	2.71	2.70	3.62
	9+9	9	9	---	---	---	3.00	3.00	---	---	---	2.34	6.00	8.00	0.57	1.65	2.26	3.63
	9+12	9	12	---	---	---	2.91	3.89	---	---	---	2.34	6.80	8.61	0.57	1.87	2.29	3.63
	1.2	9+18	9	18	---	---	---	2.93	5.87	---	---	---	2.34	8.80	11.07	0.57	2.42	2.53
9+24		9	24	---	---	---	2.78	7.42	---	---	---	2.34	10.20	12.30	0.57	2.82	2.86	3.62
12+12		12	12	---	---	---	3.75	3.75	---	---	---	2.34	7.50	9.23	0.57	2.07	2.39	3.63
12+18		12	18	---	---	---	3.76	5.84	---	---	---	2.34	9.40	11.69	0.57	2.59	2.76	3.63
12+24		12	24	---	---	---	3.50	7.00	---	---	---	2.34	10.50	12.30	0.57	2.90	3.03	3.62
18+18		18	18	---	---	---	5.50	5.50	---	---	---	2.34	11.00	12.30	0.57	3.04	3.03	3.62
18+24		18	24	---	---	---	4.93	6.57	---	---	---	2.34	11.50	12.50	0.57	3.18	3.03	3.62
24+24		24	24	---	---	---	5.75	5.75	---	---	---	2.34	11.50	12.50	0.57	3.19	3.03	3.61
7+7+7		7	7	7	---	---	2.50	2.50	2.50	---	---	2.89	7.50	8.61	0.71	2.05	2.70	3.65
7+7+9		7	7	9	---	---	2.37	2.37	3.05	---	---	2.89	7.80	9.23	0.71	2.14	2.86	3.65
7+7+12		7	7	12	---	---	2.29	2.29	3.92	---	---	2.89	8.50	9.84	0.71	2.33	3.03	3.65
7+7+18		7	7	18	---	---	2.52	2.52	6.47	---	---	2.89	11.50	12.30	0.71	3.16	3.20	3.64
7+7+24		7	7	24	---	---	2.21	2.21	7.58	---	---	2.89	12.00	12.92	0.71	3.31	3.37	3.62
7+9+9	7	9	9	---	---	2.38	3.06	3.06	---	---	2.89	8.50	9.84	0.71	2.33	2.97	3.65	
7+9+12	7	9	12	---	---	2.50	3.21	4.29	---	---	2.89	10.00	12.30	0.71	2.74	3.10	3.65	
7+9+18	7	9	18	---	---	2.37	3.04	6.09	---	---	2.89	11.50	12.30	0.71	3.16	3.30	3.64	
7+9+24	7	9	24	---	---	2.10	2.70	7.20	---	---	2.89	12.00	12.92	0.71	3.31	3.50	3.62	
7+12+12	7	12	12	---	---	2.48	4.26	4.26	---	---	2.89	11.00	12.30	0.71	3.01	3.20	3.65	
7+12+18	7	12	18	---	---	2.18	3.73	5.59	---	---	2.89	11.50	12.30	0.71	3.17	3.37	3.63	
7+12+24	7	12	24	---	---	1.95	3.35	6.70	---	---	2.89	12.00	12.92	0.71	3.32	3.50	3.61	
7+18+18	7	18	18	---	---	1.95	5.02	5.02	---	---	2.89	12.00	12.92	0.71	3.32	3.50	3.61	
9+9+9	9	9	9	---	---	3.33	3.33	3.33	---	---	2.89	10.00	12.30	0.71	2.74	3.37	3.65	
9+9+12	9	9	12	---	---	3.30	3.30	4.40	---	---	2.89	11.00	12.30	0.71	3.01	3.20	3.65	
9+9+18	9	9	18	---	---	2.88	2.88	5.75	---	---	2.89	11.50	12.30	0.71	3.17	3.37	3.63	
9+9+24	9	9	24	---	---	2.57	2.57	6.86	---	---	2.89	12.00	12.92	0.71	3.32	3.50	3.61	
9+12+12	9	12	12	---	---	3.14	4.18	4.18	---	---	2.89	11.50	12.30	0.71	3.16	3.20	3.64	
9+12+18	9	12	18	---	---	2.77	3.69	5.54	---	---	2.89	12.00	12.92	0.71	3.31	3.37	3.62	
9+12+24	9	12	24	---	---	2.40	3.20	6.40	---	---	2.89	12.00	12.92	0.71	3.32	3.50	3.61	
9+18+18	9	18	18	---	---	2.40	4.80	4.80	---	---	2.89	12.00	12.92	0.71	3.32	3.50	3.61	
12+12+12	12	12	12	---	---	3.83	3.83	3.83	---	---	2.89	11.50	12.30	0.71	3.16	3.30	3.64	
12+12+18	12	12	18	---	---	3.43	3.43	5.14	---	---	2.89	12.00	12.92	0.71	3.31	3.50	3.62	
12+12+24	12	12	24	---	---	3.00	3.00	6.00	---	---	2.89	12.00	12.92	0.71	3.31	3.37	3.62	
12+18+18	12	18	18	---	---	3.00	4.50	4.50	---	---	2.89	12.00	12.92	0.71	3.32	3.50	3.61	
12+18+24	12	18	24	---	---	2.67	4.00	5.33	---	---	2.89	12.00	12.92	0.71	3.32	3.50	3.61	
18+18+18	18	18	18	---	---	4.00	4.00	4.00	---	---	2.89	12.00	12.92	0.71	3.32	3.50	3.61	
7+7+7+7	7	7	7	7	---	2.50	2.50	2.50	2.50	---	3.69	10.00	12.67	0.81	2.74	3.03	3.65	
7+7+7+9	7	7	7	9	---	2.57	2.57	2.57	3.30	---	3.69	11.00	12.92	0.81	3.01	3.20	3.65	
7+7+7+12	7	7	7	12	---	2.50	2.50	2.50	4.20	---	3.69	11.80	13.53	0.81	3.29	3.30	3.65	
7+7+7+18	7	7	7	18	---	2.15	2.15	2.15	5.54	---	3.69	12.00	13.53	0.81	3.31	3.71	3.63	
7+7+7+24	7	7	7	24	---	1.91	1.91	1.91	6.56	---	3.69	12.30	13.53	0.81	3.40	3.88	3.62	
7+7+9+9	7	7	9	9	---	2.63	2.63	3.38	3.38	---	3.69	12.00	13.53	0.81	3.29	3.30	3.65	
7+7+9+12	7	7	9	12	---	2.40	2.40	3.09	4.11	---	3.69	12.00	13.53	0.81	3.29	3.71	3.65	
7+7+9+18	7	7	9	18	---	2.05	2.05	2.63	5.27	---	3.69	12.00	13.53	0.81	3.31	3.71	3.63	
7+7+9+24	7	7	9	24	---	1.83	1.83	2.36	6.28	---	3.69	12.00	13.53	0.81	3.4	3.88	3.61	
7+7+12+12	7	7	12	12	---	2.21	2.21	3.79	3.79	---	3.69	12.00	13.53	0.81	3.30	3.71	3.64	
7+7+12+18	7	7	12	18	---	1.91	1.91	3.27	4.91	---	3.69	12.00	13.53	0.81	3.31	3.71	3.63	
7+7+12+24	7	7	12	24	---	1.72	1.72	2.95	5.90	---	3.69	12.30	13.53	0.81	3.41	3.88	3.61	
7+7+18+18	7	7	18	18	---	1.68	1.68	4.32	4.32	---	3.69	12.00	13.53	0.81	3.32	3.88	3.61	
7+7+18+24	7	7	18	24	---	1.54	1.54	3.95	5.27	---	3.69	12.30	13.53	0.81	3.41	3.88	3.61	
7+9+9+9	7	9	9	9	---	2.47	3.18	3.18	3.18	---	3.69	12.00	13.53	0.81	3.29	3.71	3.65	
7+9+9+12	7	9	9	12	---	2.27	2.92	2.92	3.89	---	3.69	12.00	13.53	0.81	3.30	3.71	3.64	
7+9+9+18	7	9	9	18	---	1.95	2.51	2.51	5.02	---	3.69	12.00	13.53	0.81	3.31	3.71	3.63	
7+9+9+24	7	9	9	24	---	1.76	2.26	2.26	6.02	---	3.69	12.30	13.53	0.81	3.41	3.88	3.61	
7+9+12+12	7	9	12	12	---	2.10	2.70	3.60	3.60	---	3.69	12.00	13.53	0.81	3.31	3.71	3.63	
7+9+12+18	7	9	12	18	---	1.83	2.33	3.13	4.70	---	3.69	12.00	13.53	0.81	3.32	3.88	3.61	
7+9+12+24	7	9	12	24	---	1.66	2.15	2.94	5.68	---	3.69	12.30	13.53	0.81	3.41	3.88	3.61	
7+9+18+18	7	9	18	18	---	1.62	2.08	2.88	4.15	---	3.69	12.00	13.53	0.81	3.32	3.88	3.61	
7+9+18+24	7	9	18	24	---	1.48	1.91	3.62	5.09	---	3.69	12.30	13.53	0.81	3.40	3.88	3.62	
7+12+12+12	7	12	12	12	---	1.95	3.35	3.35	3.35	---	3.69	12.00	13.53	0.81	3.31	3.71	3.63	
7+12+12+18	7	12	12	18	---													